


WES 2009 9-29-2010 Image to  
WES 2009 1-14-2012 Image

## **Walkthrough**



# WES 2009 1-14-2012 Clone and Apply Update to WES 2009 9-29-2010

When applying the WES 2009 1-14-2012 disk image to a terminal that had previously held the WES 2009 9-29-2010 disk image, there are two methods that can be used: obtaining a new partial image from the Devon IT website, or cloning the disk image from a terminal that already has the 1-14-2012 image.


 **CAUTION:** It is very important when utilizing either method of disk image application that the steps involving changing the operating system to XPe is observed. Failure to do so can result in the terminal becoming unbootable.

## Obtaining the Disk Image

### Through the Website

New OS images can be added to your Devon IT Echo Management Console inventory. If you do not already have a terminal with the WES 2009 1-14-2012 disk image being managed by your Echo appliance, you must first obtain the image.

1. Visit <http://www.devonit.com/software/microsoft-xp-embedded/downloads> to locate and download the WES 2009 1-14-2012 partial disk image. It can be easily recognized by the **part1** found in the file name.
2. Once you have downloaded the disk image from **devonit.com/**, copy that image over to your FTP server or NFS shared directory.
3. Log in to your Echo server.
4. From the **Disk Images** tab, left click on the **Add Disk Image** button above the inventory table.
5. The detail panes on the right-hand side will display various fields used to add the disk image.
  - **Name**-Enter a name for this disk image.
  - **Description**-Enter a short description for this disk image.
  - **Protocol:** From the dropdown list, choose your server:
    - **FTP:** Select this option if you will be using an internal FTP server to store and retrieve Echo disk images.
    - **CIFS:** Select this option if you have a Local Area Network (LAN) file-sharing CIFS server to store and retrieve Echo disk images.
    - **NFS:** Select this option if you have an available NFS share on a Linux/Unix server.
  - **Image Location**-Enter the location to where your disk image resides.

 **NOTE:** You may use a hostname or IP address. Examples:  
`ftp://myServerName/path/to/my/image/<name of disk image>` and `nfs://192.168.1.123/path/to/my/image/<name of image>`.

- **Username**- If required, enter the username of an account that has permissions to read & write to the image repository you specified in the **Image Location** field above.
- **Password**- If required, enter the password needed for the Username specified above.

- **Configuration File-** If **Toggle Import** is on, click **Browse** to select a Config file on your local machine. If **Toggle Import** is not on, fill the following fields:
  - Model-Enter the model name associated with this image.
  - Operating System-Select **XPe** from the dropdown menu.

△ **CAUTION: It is very important that changing the operating system to XPe is done correctly. Failure to do so can result in the terminal becoming unbootable.**

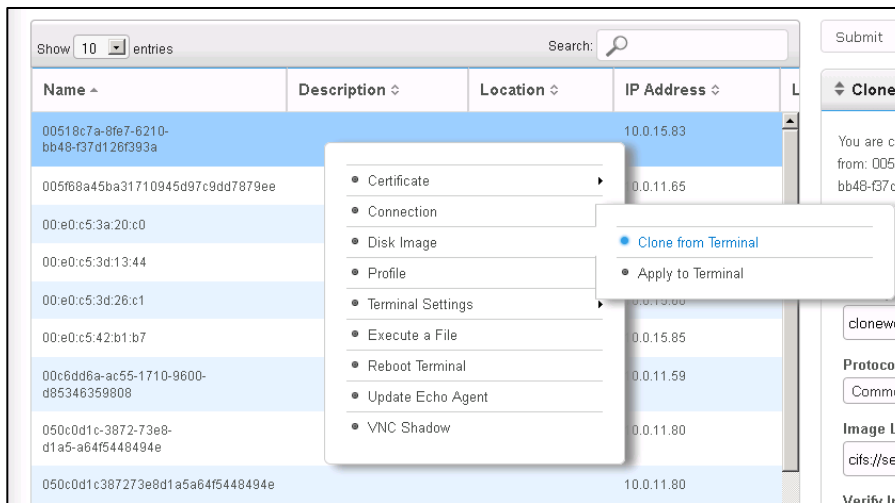
6. Click the **Submit** button to add this disk image.

You will receive a success message. In the **Disk Images** tab, the inventory table will now contain your recently added disk image.

### From Another Terminal

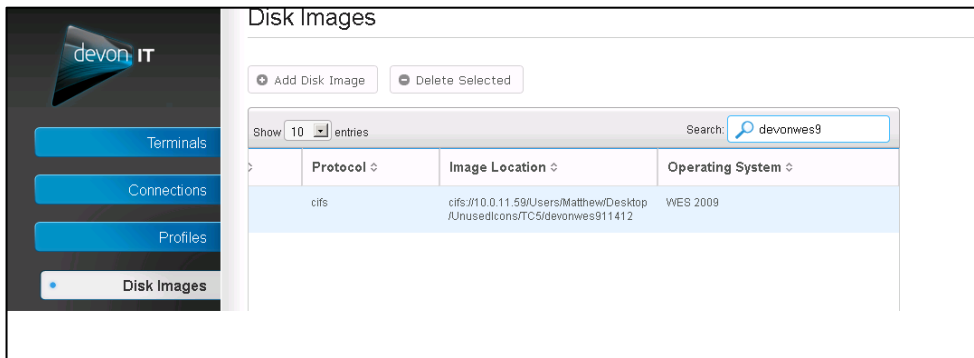
If you already have a terminal containing the 1-14-2012 disk image, you will need to clone a copy to your Echo server through the Echo management software. To do so:

- 1 In the **Terminals** tab, locate the terminal that has the appropriate WES 2009 1-14-2012 disk image on it.
- 2 Right-click on that terminal to open the **Context Menu** and then select **Disk Image**→**Clone from Terminal**.

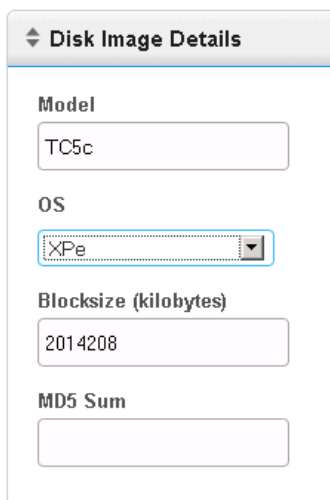


- 3 Enter the details requested in the **Clone Disk Image** pane that appears to the right and click **Submit** when finished.

- 4 Click on the **Disk Images** tab and select the newly created disk image from the inventory table.



- 5 In the Disk Image Details pane that opens to the right, change the Operating System to XPe.



**CAUTION:** It is very important that changing the operating system to XPe is done correctly. Failure to do so can result in the terminal becoming unbootable.

- 6 Click the Update button to finish editing this disk image.

Once a disk image containing the WES 2009 1-14-2012 version has been successfully added to your disk image inventory with XPe saved as its operating system, this image can then be safely applied to terminals previously running the WES 2009 9-29-2010 image.

# Getting Help

Please visit the support page on our website, <http://www.devonit.com/support>, to find web forms that allow you to create inquiry tickets with the technical support department and submit Return Material Authorization (RMA) forms for our products.

Support Center phone lines are open 24 hours, 7 days a week.

**Toll Free:** 1-800-369-7290

**Local Phone:** 610-757-4220

Warranty information and registration can be found at:

<http://www.devonit.com/products/products-warranty.php>

